



## Description

Research population and sample serve as the cornerstones of any scientific inquiry. They hold the power to unlock the mysteries hidden within data. Understanding the dynamics between the research population and sample is crucial for researchers. It ensures the validity, reliability, and generalizability of their findings. In this article, we uncover the profound role of the research population and sample, unveiling their differences and importance that reshapes our understanding of complex phenomena. Ultimately, this empowers researchers to make informed conclusions and drive meaningful advancements in our respective fields.

## What Is Population?

The research population, also known as the target population, refers to the entire group or set of individuals, objects, or events that possess specific characteristics and are of interest to the researcher. It represents the larger population from which a sample is drawn. The research population is defined based on the research objectives and the specific parameters or attributes under investigation. For example, in a study on the effects of a new drug, the research population would encompass all individuals who could potentially benefit from or be affected by the medication.

## When Is Data Collection From a Population Preferred?

In certain scenarios where a comprehensive understanding of the entire group is required, it becomes necessary to collect data from a population. Here are a few situations when one prefers to collect data from a population:

### 1. Small or Accessible Population

When the research population is small or easily accessible, it may be feasible to collect data from the entire population. This is often the case in studies conducted within specific organizations, small communities, or well-defined groups where the population size is manageable.

### 2. Census or Complete Enumeration

In some cases, such as government surveys or official statistics, a census or complete enumeration of the population is necessary. This approach aims to gather data from every individual or entity within the population. This is typically done to ensure accurate representation and eliminate sampling errors.

### 3. Unique or Critical Characteristics

If the research focuses on a specific characteristic or trait that is rare and critical to the study, collecting data from the entire population may be necessary. This could be the case in studies related to rare diseases, endangered species, or specific genetic markers.

### 4. Legal or Regulatory Requirements

Certain legal or regulatory frameworks may require data collection from the entire population. For instance, government agencies might need comprehensive data on income levels, demographic characteristics, or healthcare utilization for policy-making or resource allocation purposes.

### 5. Precision or Accuracy Requirements

In situations where a high level of precision or accuracy is necessary, researchers may opt for population-level data collection. By doing so, they mitigate the potential for sampling error and obtain more reliable estimates of population parameters.

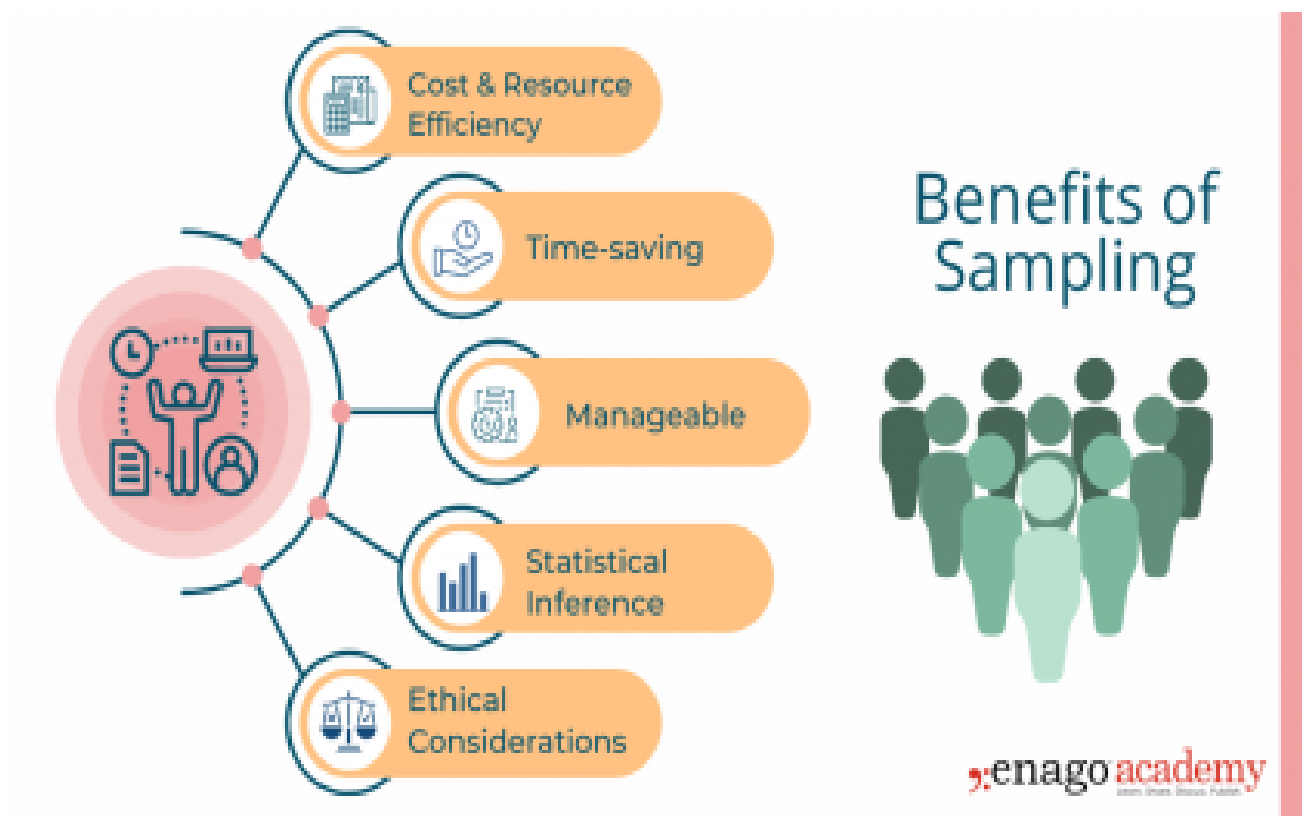
## What Is a Sample?

A [sample is a subset of the research population](#) that is carefully selected to represent its characteristics. Researchers study this smaller, manageable group to draw inferences that they can generalize to the larger population. The selection of the sample must be conducted in a manner that ensures it accurately reflects the diversity and pertinent attributes of the research population. By studying a sample, researchers can gather data more efficiently and cost-effectively compared to studying the entire population. The findings from the sample are then extrapolated to make conclusions about the larger research population.

## What Is Sampling and Why Is It Important?

Sampling refers to the process of selecting a sample from a larger group or population of interest in order to gather data and make inferences. The goal of sampling is to obtain a sample that is representative of the population, meaning that the sample accurately reflects the key attributes, variations, and proportions present in the population. By studying the sample, researchers can draw conclusions or make predictions about the larger population with a certain level of confidence.

Collecting data from a sample, rather than the entire population, offers several advantages and is often necessary due to practical constraints. Here are some reasons to collect data from a sample:



## 1. Cost and Resource Efficiency

Collecting data from an entire population can be expensive and time-consuming. Sampling allows researchers to gather information from a smaller subset of the population, reducing costs and resource requirements. It is often more practical and feasible to collect data from a sample, especially when the population size is large or geographically dispersed.

## 2. Time Constraints

Conducting research with a sample allows for quicker data collection and analysis compared to studying the entire population. It saves time by focusing efforts on a smaller group, enabling researchers to obtain results more efficiently. This is particularly beneficial in time-sensitive research projects or situations that necessitate prompt decision-making.

## 3. Manageable Data Collection

Working with a sample makes [data collection more manageable](#). Researchers can concentrate their efforts on a smaller group, allowing for more detailed and thorough data collection methods. Furthermore, it is more convenient and reliable to store and conduct statistical analyses on smaller datasets. This also facilitates in-depth insights and a more comprehensive understanding of the research topic.

## 4. Statistical Inference

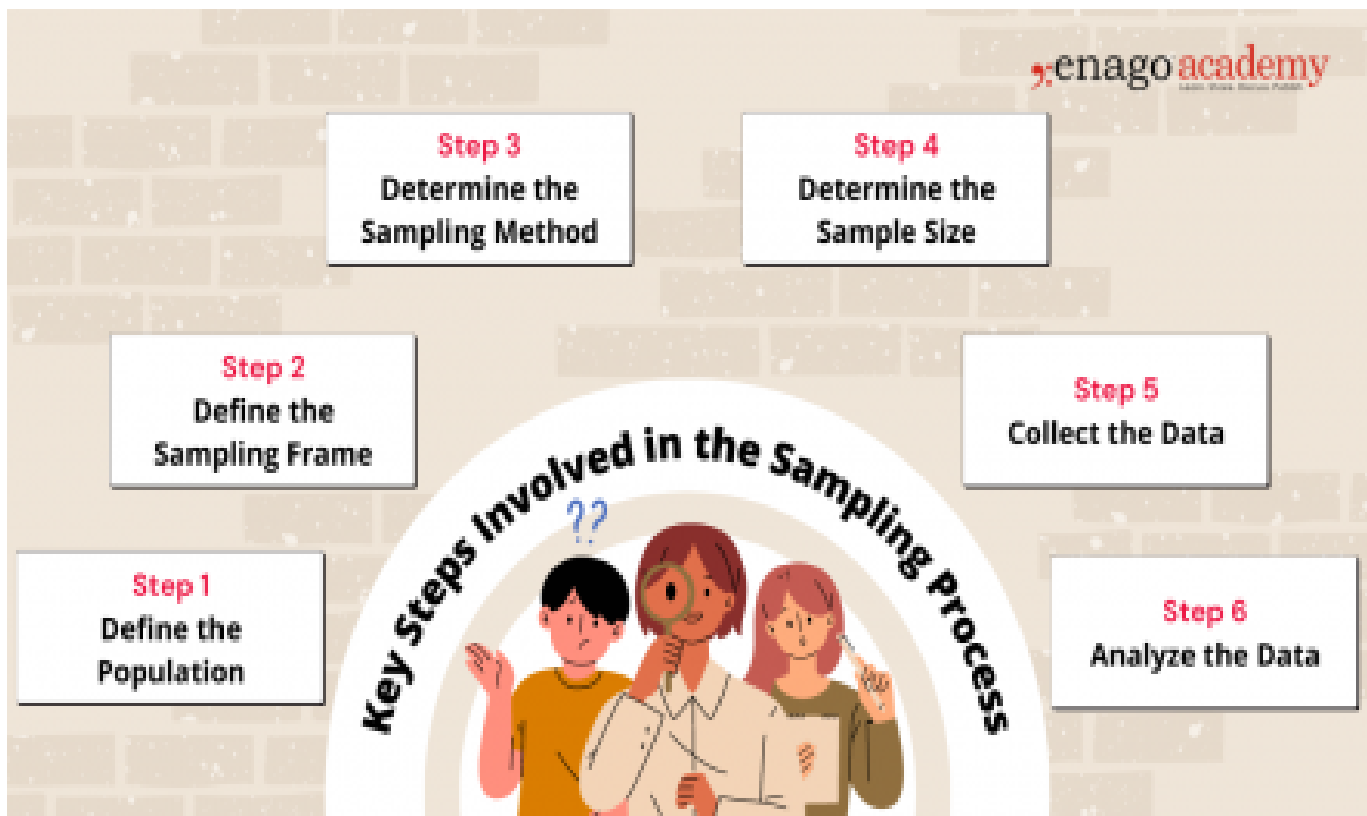
Collecting data from a well-selected and representative sample enables valid statistical inference. By using appropriate statistical techniques, researchers can generalize the findings from the sample to the larger population. This allows for meaningful inferences, predictions, and estimation of population parameters, thus providing insights beyond the specific individuals or elements in the sample.

## 5. Ethical Considerations

In certain cases, collecting data from an entire population may pose ethical challenges, such as invasion of privacy or burdening participants. Sampling helps protect the privacy and well-being of individuals by reducing the burden of data collection. It allows researchers to obtain valuable information while [ensuring ethical standards are maintained](#).

## Key Steps Involved in the Sampling Process

Sampling is a valuable tool in research; however, it is important to carefully consider the sampling method, sample size, and potential biases to ensure that the findings accurately represent the larger population and are valid for making conclusions and generalizations. While the specific steps may vary depending on the research context, here is a general outline of the sampling process:



### 1. Define the Population

Clearly define the target population for your research study. The population should encompass the group of individuals, elements, or units that you want to draw conclusions about.

## 2. Define the Sampling Frame

Create a sampling frame, which is a list or representation of the individuals or elements in the target population. The sampling frame should be comprehensive and accurately reflect the population you want to study.

## 3. Determine the Sampling Method

Select an appropriate [sampling method](#) based on your research objectives, available resources, and the characteristics of the population. You can perform sampling by either utilizing probability-based or non-probability-based techniques. Common sampling methods include random sampling, stratified sampling, cluster sampling, and convenience sampling.

## 4. Determine Sample Size

[Determine the desired sample size](#) based on statistical considerations, such as the level of precision required, desired confidence level, and expected variability within the population. Larger sample sizes generally reduce sampling error but may be constrained by practical limitations.

## 5. Collect Data

Once the sample is selected using the appropriate technique, collect the necessary data according to the research design and [data collection methods](#). Ensure that you use standardized and consistent data collection process that is also appropriate for your research objectives.

## 6. Analyze the Data

Perform the necessary statistical analyses on the collected data to derive meaningful insights. [Use appropriate statistical techniques](#) to make inferences, estimate population parameters, test hypotheses, or identify patterns and relationships within the data.

## Population vs Sample — Differences and examples

While the population provides a comprehensive overview of the entire group under study, the sample, on the other hand, allows researchers to draw inferences and make generalizations about the population. Researchers should employ careful sampling techniques to ensure that the sample is representative and accurately reflects the characteristics and variability of the population.

## Research Population vs Sample



Population	Sample
Represents the entire group of individuals or elements of interest to the researcher.	Subset of the population selected for data collection and analysis.
The measurable characteristic of the population, like the mean or standard deviation, is known as the parameter.	The measurable characteristic of the sample is called a statistic.
Parameters and characteristics of the population are the focus of the study.	Data collected from the sample is used to make inferences about the population.
Difficult to access and gather data from the entire population due to logistical and resource constraints.	More feasible and practical to collect data from a sample within the available resources and time frame.



@EnagoAcademy



enagoacademy



enago.com/enagoacademy

### Example 1:

**Research Study:** Investigating the prevalence of stress among high school students in a specific city and its impact on academic performance.

**Population:** All high school students in a particular city

**Sampling Frame:** The sampling frame would involve obtaining a comprehensive list of all high schools in the specific city. A random selection of schools would be made from this list to ensure representation

from different areas and demographics of the city.

**Sample:** Randomly selected 500 high school students from different schools in the city

The sample represents a subset of the entire population of high school students in the city.

## Example 2:

**Research Study:** Assessing the effectiveness of a new medication in managing symptoms and improving quality of life in patients with the specific medical condition.

**Population:** Patients diagnosed with a specific medical condition

**Sampling Frame:** The sampling frame for this study would involve accessing medical records or databases that include information on patients diagnosed with the specific medical condition. Researchers would select a convenient sample of patients who meet the inclusion criteria from the sampling frame.

**Sample:** Convenient sample of 100 patients from a local clinic who meet the inclusion criteria for the study

The sample consists of patients from the larger population of individuals diagnosed with the medical condition.

## Example 3:

**Research Study:** Investigating community perceptions of safety and satisfaction with local amenities in the neighborhood.

**Population:** Residents of a specific neighborhood

**Sampling Frame:** The sampling frame for this study would involve obtaining a list of residential addresses within the specific neighborhood. Various sources such as census data, voter registration records, or community databases offer the means to obtain this information. From the sampling frame, researchers would randomly select a cluster sample of households to ensure representation from different areas within the neighborhood.

**Sample:** Cluster sample of 50 households randomly selected from different blocks within the neighborhood

The sample represents a subset of the entire population of residents living in the neighborhood.

## Summary

To summarize, sampling allows for cost-effective data collection, easier [statistical analysis](#), and increased practicality compared to studying the entire population. However, despite these advantages, sampling is subject to various challenges. These challenges include sampling bias, non-response bias, and the potential for sampling errors.

To minimize bias and enhance the [validity of research findings](#), researchers should employ appropriate sampling techniques, clearly define the population, establish a comprehensive sampling frame, and monitor the sampling process for potential biases. Validating findings by comparing them to known population characteristics can also help evaluate the generalizability of the results. Properly understanding and implementing sampling techniques ensure that research findings are accurate, reliable, and representative of the larger population. By carefully considering the choice of population and sample, researchers can draw meaningful conclusions and, consequently, make valuable contributions to their respective fields of study.

Now, it's your turn! Take a moment to think about a research question that interests you. Consider the population that would be relevant to your inquiry. Who would you include in your sample? How would you go about selecting them? Reflecting on these aspects will help you appreciate the intricacies involved in designing a research study. Let us know about it in the comment section below or reach out to us using **#AskEnago** and tag **@EnagoAcademy** on [Twitter](#), [Facebook](#), and [Quora](#).

### Category

1. Manuscripts & Grants
2. Reporting Research
3. Trending Now

### Date Created

2023/06/23

### Author

riyat